

THE BCA MEGAPHONE

BURLINGTON CHRISTIAN ACADEMY NEWSLETTER

Burlington Christian Academy inspires students to excel through Biblical Truth, Intentional Discipleship and Rigorous Academics for God's glory.



Mark Your Calendar

August 22nd- High School Retreat Day
(required for all High School students)

September 1st- Labor Day Holiday
(No School Prek-12th)

September 11th- Mid Quarter Grades Check

September 19th- Fall Sports Parade

September 22nd- Professional Development Day
(No School Prek-12th)

September 24th- See You at the Pole - National
Student Prayer Day

September 24th- HS Service Day

September 30th- Picture Day
(Preschool - 11th grade)

GOLF TOURNAMENT

PRIZES NEEDED



PRIZE SUGGESTIONS BELOW:

- **COOLERS**
- **GAS GIFT CARDS**
- **SLEEVES OF GOLF BALLS**
- **RESTAURANT GIFT CARDS**
- **GIFT BASKETS**
- **TICKETS TO AN EVENT**
- **GOLF LESSON CERTIFICATES**
- **GRILLING SUPPLIES**
- **CAR WASH GIFT CARDS**
- **CAR WASH BASKET**
- **COFFEE LOVERS BASKET**
- **UMBRELLAS**
- **GOURMET SNACK BASKET**
- **GREEN FEE CERTIFICATE**
- **CAMPING SUPPLIES**
- **VACATION GETAWAY**
- **DEPARTMENT STORE GIFT CARDS**
- **MOVIE TICKETS**
- **TAILGATE SUPPLIES**
- **SPORTING GOOD GIFT CARDS**
- **ELECTRONICS**
- **GYM MEMBERSHIPS**
- **FOLDING RECREATION CHAIR**
- **GROCERY GIFT CARDS**
- **STAINLESS STEEL TUMBLERS**
- **PERSONAL TRAINING SESSIONS**

This is not an exclusive list. Please contact
Tarrie mixon in regards to donations @
Tmixon@bcaroyals.com

Burlington Christian Academy

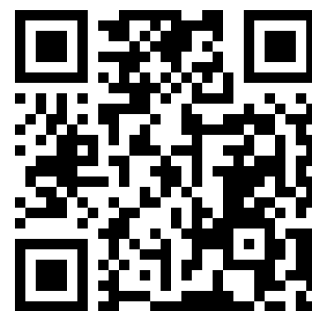
Fall Golf Classic

October 3, 2025

Stoney Creek Golf Club
911 Golf House Road East
Whitsett, NC 27377



Scan QR Code to Register



50/50
RAFFLE!

8:00 a.m. Breakfast & Practice Facilities Open

9:00 a.m. Shotgun Start

WE'D LOVE TO HEAR FROM YOU!

We'd Love to Hear from You!

At BCA, we are always looking for ways to grow and serve our families better. We would love to know how we're doing—and more importantly, why you love being part of the BCA family.

If BCA has made a difference in your child's life or your family's journey, please take a moment to share your thoughts with us! We'd also love it if you could attach a family photo to accompany your review.

Please note: Your review and photo may be shared online or within our BCA community to encourage and inspire others.

✉ Send your review and photo to: akurak@bcaroyals.com

Thank you so much for your ongoing support of our mission. We are grateful to partner with you in faith and education!

Blessings,
The BCA Team

Our Fundraiser is Coming!



Learn More!

Burlington Christian Academy Dance Fit and Color Run Fundraiser

What is this fundraiser?

Our school is raising \$60,000 for student experiences and security upgrades. During this fundraiser, families can earn donations online to help reach our school goal, and on the final day, all students will participate in our Dance Fit and Color Run to celebrate!

What's Included?

- Engaging Character Enrichment
- Rewards for Donations
- All-Inclusive Event Day
- Easy Tech Sharing Features
- Teacher Support
- and more!

How do I get involved?

Sign up at **mybooster.com** on 8/21!

Key dates to remember:

Sign Up Online at

mybooster.com

8/21

Kickoff in School

9/4

Event Day

9/12

Stay tuned for more details and follow us on social media for updates!

BACK TO SCHOOL!



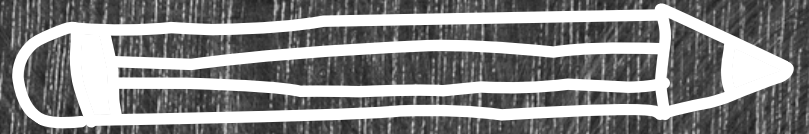


STUDY HARD



You
got
This!

LEARN and grow



Thank you

PREFERRED CORPORATE PARTNERS

DAVE'S
FURNITURE
*Decorator's
Warehouse*

Garden Valley
Farmers Market

BOBBITT
CONSTRUCTION

 **Atlantic Union**
Financial Consultants

Crenshaw
HYUNDAI


Don Allred
INSURANCE
HEALTH•AUTO•HOMEOWNERS•LIFE


Amber Harvalias
REALTOR
exp REALTY 336-263-4875

ATHOMEWITHAMBER.COM

 **BESHIEL**
CHIROPRACTIC
C E N T E R

CAROLINA NISSAN

 **Carolina**
Custom PROMOTIONS

**THE
BUDD
GROUP**

hci *HealthCare*
CONSULTING



convergence
technology simplified

A composite image featuring a portrait of Ashley Boteler on the left and a RE/MAX logo on the right. The RE/MAX logo includes a large '1' with a '#' symbol and a hot air balloon with 'RE/MAX' written on it.

Ashley Boteler RE/MAX Diamond Realty
202 S. 5th Street
Mebane, NC 27302
www.ashleyboteler.com

NICE EYE CARE
Dr. Keith B. Nice

2603 Holly Hill St. Burlington
336-228-NICE

RJR
ELECTRIC • HEATING • AIR
— 336.222.6940 —
Burlington, NC

FirstSource
EQUIPMENT
RENTALS & SALES
RENT IT!
336-227-6275

JOHN *Collins*
SOUTHERN BUILDERS OF ALAMANCE

COX
TOYOTA
Before You Buy, Give COX a Try!

WWW.SUPERFITNESSGYMEQUIPMENT.COM

SUPERFITNESS
NEW AND USED
GYM EQUIPMENT

VISIT OUR WAREHOUSE  

908 SANDY CROSS RD | BURLINGTON NC




Benjamin Moore®

PIEDMONT PAINT WAREHOUSE 



W.P. ROSE
PLUMBING, INC.



WWW.SALVATIONAUTOWORKS.COM
 Collision Repair, Insurance Claims, Paint & Body Work (336) 662-5123



GROOMS
 HEAVY TRUCK SALES



Right Touch Interiors
*Covering all your
 residential and commercial flooring needs!*

30 Years of Excellence

**We proudly
 support
 Christian
 Education**

807 Post St.
 Greensboro, NC 27405
 336-378-0033



SAWYER EXTERMINATING

A DIVISION OF NORTHWEST EXTERMINATING

VOSSERS

ORTHODONTICS

State Farm



Mike Shoffner Agency Inc

336-570-0416
 getmike4ins.com




Nationwide®
 is on your side


William Snyder
 INSURANCE

William Snyder Insurance
 Graham, NC
 336-226-1563
www.williamsnyderinsurance.com



Life Push, LLC



WORD
ROCK DRILLS
Make a Way.




 EST. 1925
JENNINGS BRYAN-CHAPPELL
 INSURANCE

336.227.7458
jbcins.com

Business • Home • Auto • Life • Group Benefits




LOWE ORTHODONTICS



La Fiesta



TRIANGLE
GRADING
AND
PAVING
INC.



The GIBSON
GROUP
 Real Estate
 336-965-0398

The Gibson Group powered by eXp



WINDOW
SUNTAMERS
TINTING



NorthTop
 CONSTRUCTION



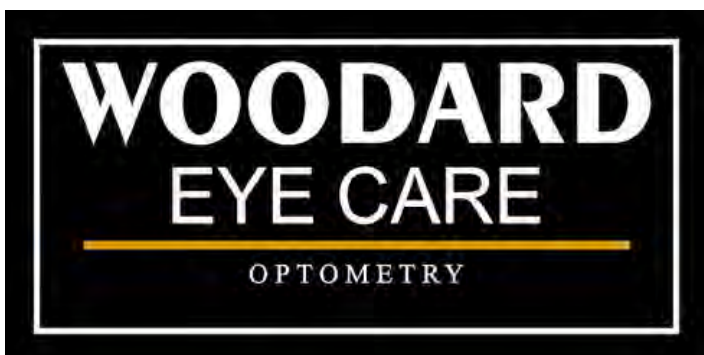
Greg Ellington

Vice President, Atlantic Union Financial Consultants
Senior Financial Consultant, RJFS

(336)584-1234

Greg.Ellington@aubwm.com

Securities offered through Raymond James Financial Services, Inc., member FINRA/SIPC. Atlantic Union Financial Consultants is not a registered broker/dealer and is independent of Raymond James Financial Services.



HOME stretch

Home Preparation Services

